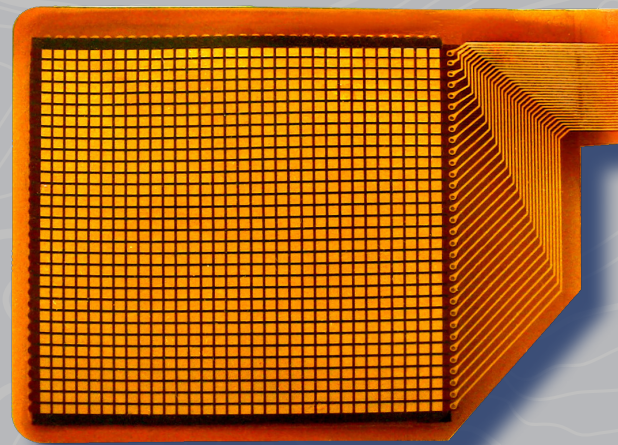
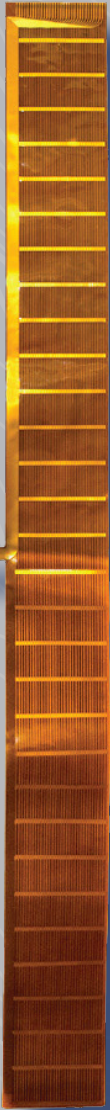


NANO - POLYMER CORE H SERIES

Tactilus® H-series allow the user to capture and record pressure conditions occurring in between any two contacting or impacting surfaces in real time. The paper-thin Tactilus® H-series sensor is actually placed at the contact interface where it records and assimilates both pressure distribution and pressure magnitude on your Windows® based computer.

The exciting advancements in Nano-materials have allowed us to introduce the world's first nano-polymer based tactile surface sensor. With greater temperature resistance, more accuracy, less drift and better repeatability the user now can perform surface mapping analyses with greater confidence than ever before!

The Tactilus® H-series is a matrix-based tactile surface sensor, essentially an “electronic skin” capable of recording and interpreting the distribution and intensity of pressure between two contacting or mating surfaces, integrating the collected data into a powerful Windows®-based toolkit. Each Tactilus® H-series sensor is precisely assembled to strict tolerances, individually calibrated, and serialized. The architectural philosophy of the Tactilus® H-series is modular, allowing portability, scalability, and simultaneous data collection from up to four discrete sensor pads. Based on the configuration and the client's needs, H-Series sensors can also connect to all Tactilus Hubs (one large and one small), thus offering greater operational flexibility. The Tactilus software employs sophisticated mathematical algorithms to intelligently separate signal from noise, while advanced electronic shielding techniques maximize the sensor's immunity to interference, temperature, and humidity.



HUB SMALL SPECIFICATIONS

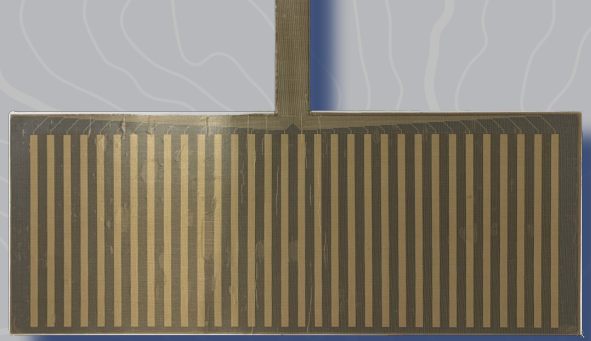
Power Supply	USB cable
Matrix	16x16 8x16
Connection	Only USB
Software	Ts10



HUB LARGE SPECIFICATIONS

Power Supply	Battery and USB
Matrix	48x48 48x96
Connection	Only USB / Bluetooth
Software	Ts10

Technology	Nano-polymer Composite
Pressure Range	0 - 350 PSI (0 - 25 kg/cm ²)
Matrix Size	Up to 96 x 96 lines
Sensing Points	Up to 4,608 total
Sensing Area Size	Up to 18" x 31" (47cm x 80cm) or 8.7" x 51" (22cm x 130cm)
Scan Speed	Up to 800 FPS
Supply Voltage	3 - 6 VDC
Temperature Capability	Up to 250°F (120°C)
Spatial Resolution	From 0.04 in. (1 mm)
Thickness	16 mils (0.4 mm)
Accuracy	± 10%
Repeatability	± 2%
Repeatability Error	± 3%
Hysteresis	± 5%
Non-linearity	± 1.5%
Software	Ts10



COMMON APPLICATIONS



PACKAGING

NIP IMPRESSION,
HEAT SEALING



AUTOMOTIVE

BRAKE PAD, CLAMPING,
CLUTCH, FUEL CELL,
GASKET/BOLTED JOINT,
IMPACT STUDY, LAMINATION



ELECTRONICS

HEAT SINK, BGA, CONNECTOR,
LAMINATION, LCD BONDING,
WAFER BONDING/POLISHING



AEROSPACE

COMPOSITE LAYUP,
FUEL CELL, LAMINATION

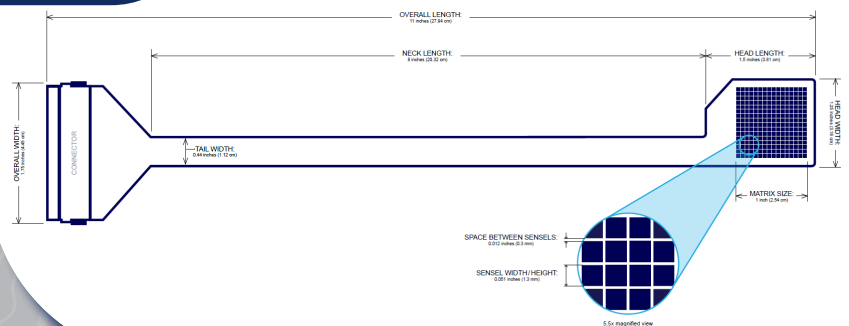


ERGONOMICS

BIOMECHANICS, BODY MAPPING

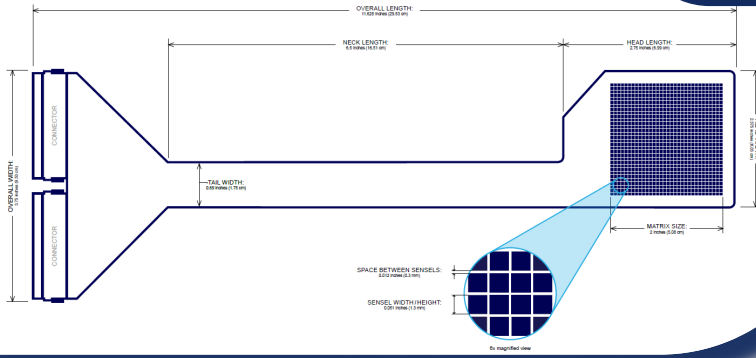
System includes: sensor elements, electronic controller, software and cables.
*HP (high precision) Free Form sensors can characterize pressure at ± 5%

SENSOR TYPE: 1" x 1" SENSOR Matrix: 16 x 16 (256 cells)



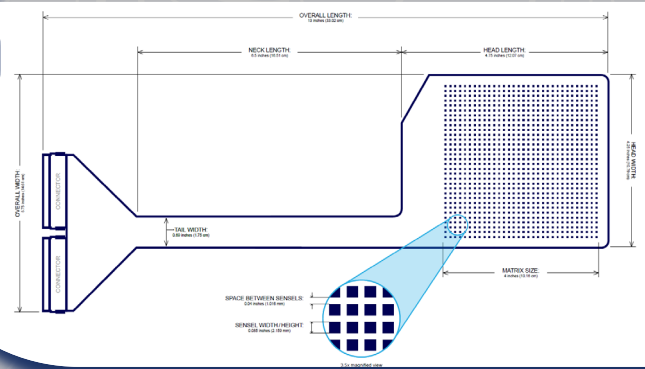
2"x 2" SENSOR

Matrix: 32 x 32 (1024 cells)



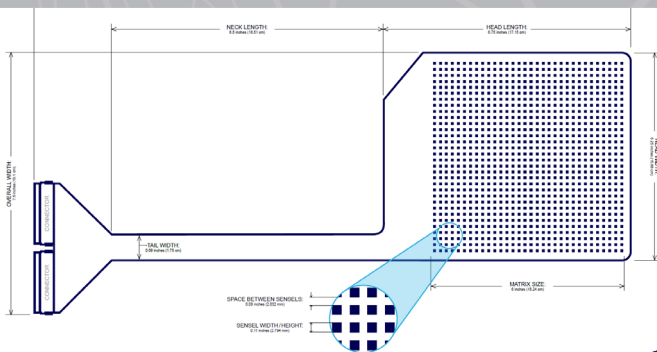
4"x 4" SENSOR

Matrix: 32 x 32 (1024 cells)



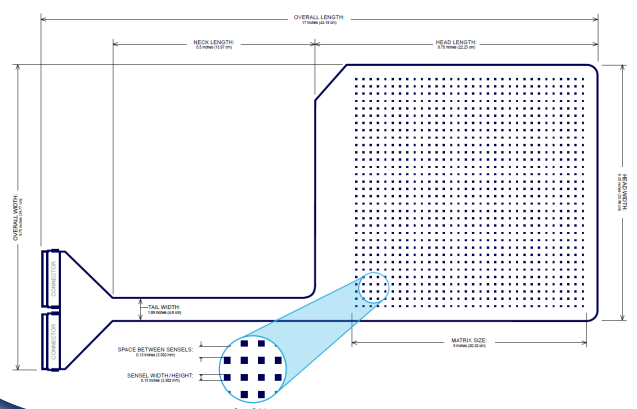
6"x 6" SENSOR

Matrix: 32 x 32 (1024 cells)



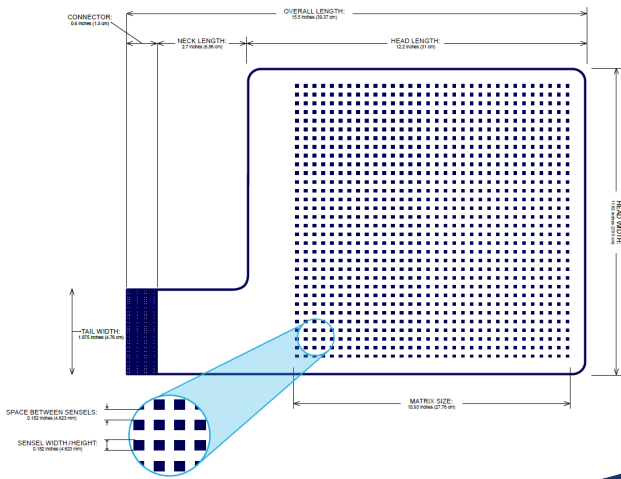
8"x 8" SENSOR

Matrix: 32 x 32 (1024 cells)



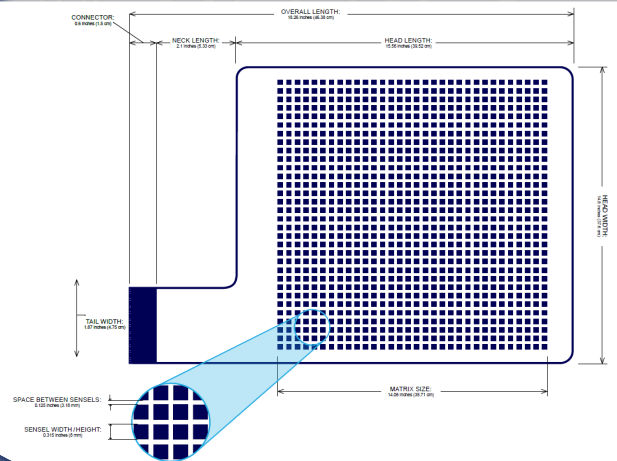
11" x 11" SENSOR

Matrix: 32 x 32 (1024 cells)



14" x 14" SENSOR

Matrix: 32 x 32 (1024 cells)



Tactilus[®]



SENSOR PRODUCTS INTL.
TACTILE PRESSURE EXPERTS

www.sensorprod.com
email: sales@sensorprod.eu

ITALY HEADQUARTERS
Via Bruno Buozzi 25 - Castel Maggiore 40013 (BO) Italy
tel. +39 051 045 1857

USA OFFICE
300, Madison Ave - Madison NJ 07940 - USA