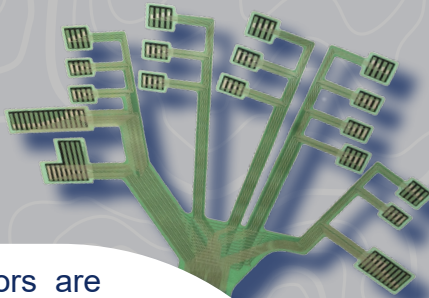
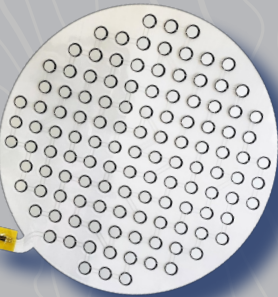
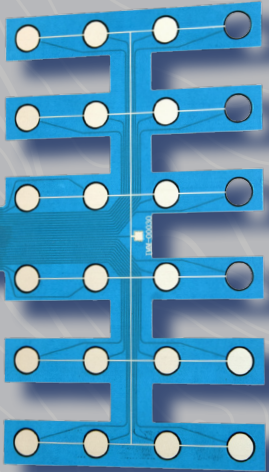


R SERIES

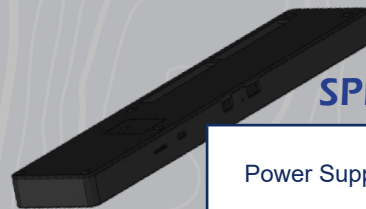
Exciting advancements in conductive ink printing have allowed us to develop a sensor that has less batch to batch variation, greater accuracy, and a level of durability that is often associated with hand tools. Tactilus® R-Series is so thin and packed with such tight spatial resolution it's the closest thing you'll see to human skin. By biomimicking human skin we've taken surface contact pressure measurement to a whole new level. The Tactilus® sensor consists of a series of interlaced lines that create a matrix with as many as 4,608 unique sensing points. Tactilus® Windows® based tool-kit scientific software communicates with the sensor up to 1,000 times per second - fast enough for impact force measurement. For users desiring direct interfacing with their own control software Sensor Products can supply an API and DLL.



HUB SMALL SPECIFICATIONS

Power Supply	USB cable
Matrix	16x16 8x16
Connection	Only USB
Software	Ts10

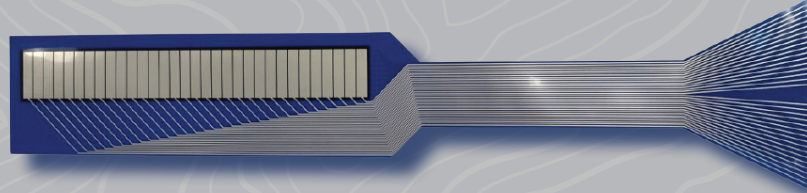
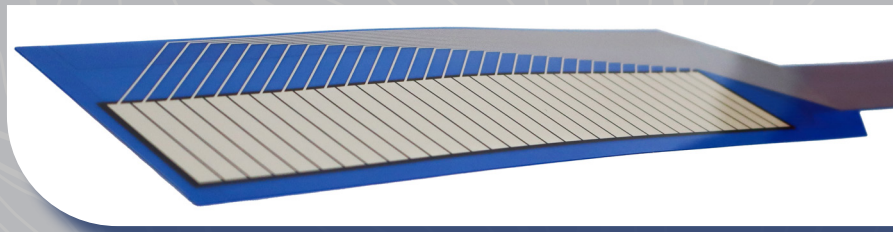
Tactilus® R-Series sensors are used worldwide in paper, packaging, film and sheet metal mills for demanding applications such as roll-to-roll pressure measurement. Every mill that processes roll material must ensure that the rolls the material passes through are flat and properly tensioned. The Tactilus® R-Series is thin yet extremely durable, capable of operating in harsh environments for tens of thousands of cycles or more. Depending on the configuration and customer needs, R-sensors can also connect to all Tactilus Hubs (one large and one small), providing greater operational flexibility. The Tactilus® R-Series system offers a unique combination of customization, cost-effectiveness and ease of use that is unmatched in the market. By bringing surface pressure sensing technology to a new level of accessibility, the Tactilus® R-Series opens up new applications that were previously inaccessible to surface mapping technology.



HUB LARGE SPECIFICATIONS

Power Supply	Battery
Matrix	48x48 48x96
Connection	Only USB / Bluetooth
Software	Ts10

Technology	Printed Resistive Ink
Pressure Range	0.5 - 700 PSI (0.035 - 49 kg/cm ²)
Max. Sensor Size	16 in x 36 in (40 cm x 91 cm)
Min. Sensor Point Size	0.03 in x 0.03 in (0.8 mm x 0.8 mm)
Minimum Thickness	10 mils (0.01 mm)
Minimum Spacing	0.01 in (0.5 mm)
Max. Sensing Points	4,608
Temperature Range	-15°F to +131°F (-26°C - 55°C)
Max. Scan Speed	Up to 800 FPS
Substrate	2 mil Myler - thinnest PET (0.05 mm)
Accuracy	± 10%
Repeatability	± 2%
Repeatability Error	± 3%
Hysteresis	± 5%
Non-linearity	± 1.5%
Drift	< 10% per log (time scale)
Calibration	NIST Traceable
Wireless	USB (min. of 40 Hz); 30 ft (9.14 m) range
Software Platform	Windows 10



COMMON APPLICATIONS



HUMAN BODY INTERFACE

GRIP PRESSURE, ERGONOMICS, JOINT ANALYSIS



PACKAGING

HEAT SEALING, NIP PRESSURES, LAMINATION



AUTOMOTIVE

DOOR SEALS, FUEL CELLS



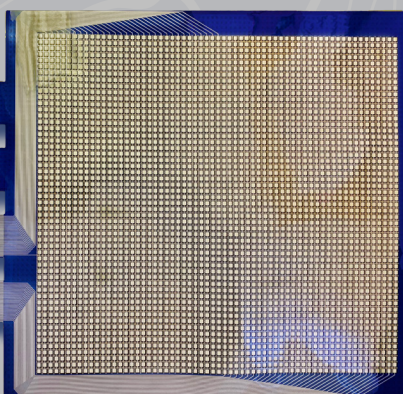
ELECTRONICS

HEAT SINKS, NIP PRESSURES, LAMINATION, LCD BONDING, BATTERIES



AEROSPACE

COMPOSITE BONDING



Tactilus®

SPI

SENSOR PRODUCTS INTL.
TACTILE PRESSURE EXPERTS

www.sensorprod.com
email: sales@sensorprod.eu

ITALY HEADQUARTERS
Via Bruno Buozzi 25 - Castel Maggiore 40013 (BO) Italy
tel. +39 051 045 1857

USA OFFICE
300, Madison Ave - Madison NJ 07940 - USA